



Total Solution Provider in Saw Device

SL06516AV

65.0MHz IF SAW Filter
16.30 MHz Bandwidth
Revision 0: 16. Oct. 2008



-
- Electrical Characteristics
 - Package Dimensions
 - Testing Environment
 - Frequency Characteristics
-

SAWNICS Inc.

460 Cheonheung-ri, Seonggeo-eup, Cheonan-si, Chungcheongnam-do, 330-836 / Korea.
Tel: +82 41 550 9372 / Fax: +82 41 550 9399 / www.sawnics.com

□ Electrical Characteristics

Maximum Ratings

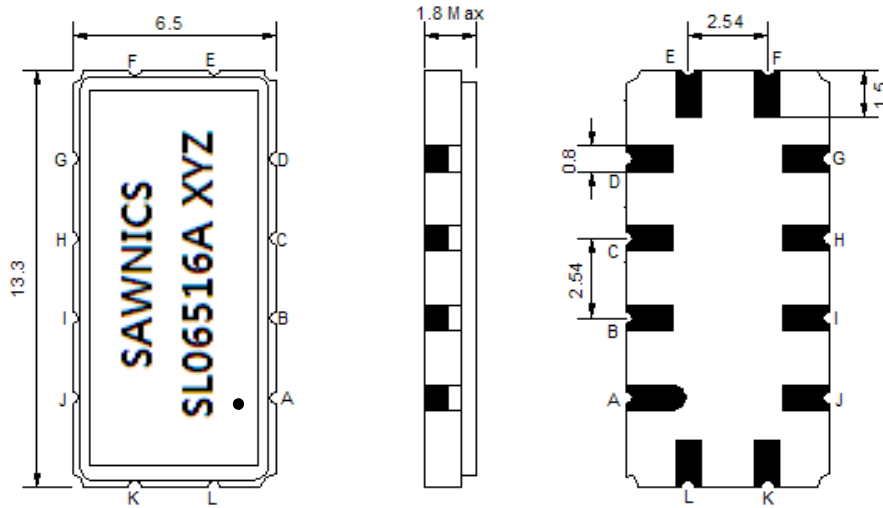
Parameters Description	Unit	Minimum	Typical	Maximum
Operation Temperature Range	°C	-5	-	55
Storage Temperature Range	°C	-40	-	85
Maximum DC Voltage	V	-	-	10
Maximum Input Power	dBm	-	-	10
Source Impedance (single ended) ⁽¹⁾	Ω	-	50	-
Load Impedance (single ended) ⁽¹⁾	Ω	-	50	-
Package type & size	V			
Length x Width	mm ²	-	13.3 x 6.5	-
Height	mm	-	-	1.8

Electrical Specification

Center Frequency (Fo)	MHz	-	65.0	-
Insertion Loss at Fo	dB	-	12.0	15.0
Group Delay Variation (Fo±7.4MHz)	ns	-	22	50
Absolute Delay Time at Fo	us	-	1.0	-
Temperature Coefficient	ppm/°C	-	-86	-
Amplitude Ripple (Fo±7.4MHz)	dB	-	0.21	0.80
Bandwidth at -1dB	MHz	14.80	16.30	-
Bandwidth at -3dB	MHz	-	17.07	-
Bandwidth at -40dB	MHz	-	20.30	21.00
Ultimate Rejection	dB	40	47	-

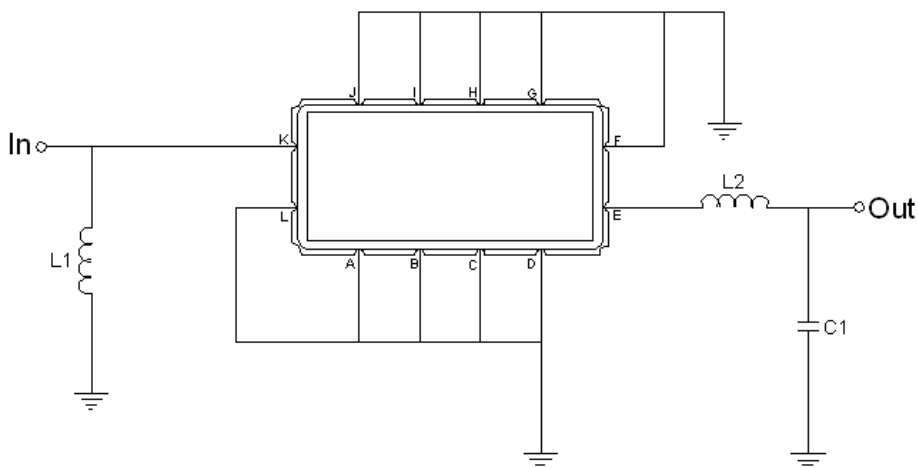
Notes : (1) With Matching Network (Ref. Testing Environment Circuit as shown below).
Those impedances could be modified with different impedance values and/or structures, if necessary.

Package Dimensions



Pin Description	
A, B, C, D, F, G, H, I, J, L	Ground
K	Input
E	Output

Testing Environment



Test Fixture & Values	
Input	L1=150 nH
Output	L2=150 nH, C1=27pF
Source/Load Impedance	50 Ω

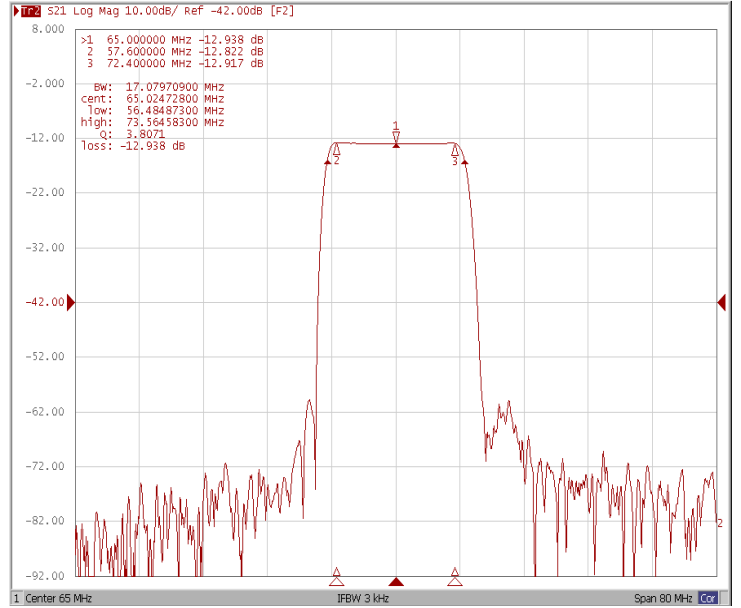
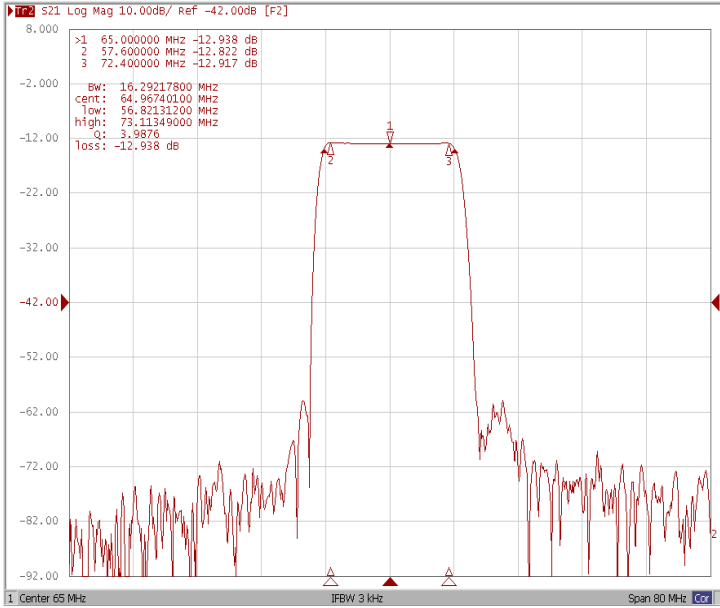


Frequency Characteristics

Frequency Response

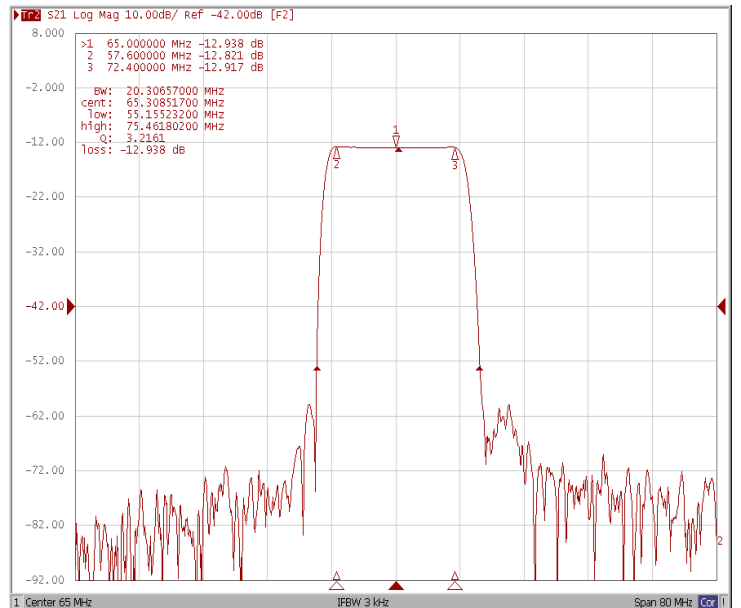
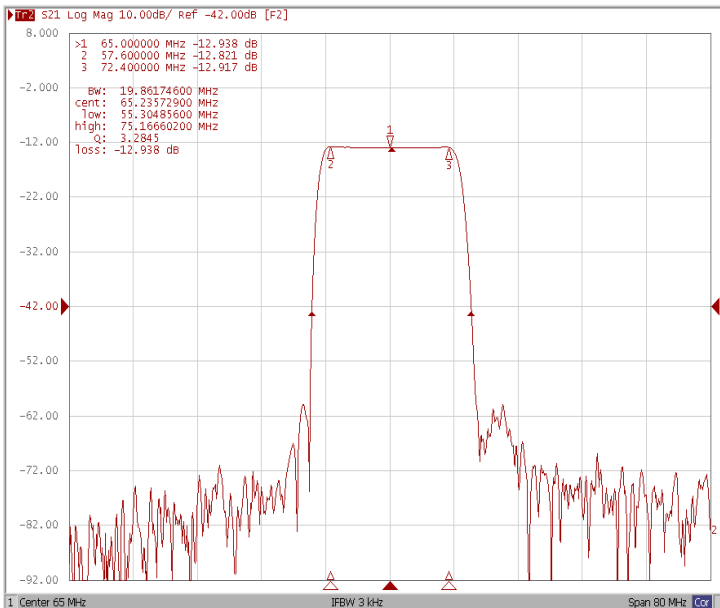
Bandwidth at -1.0 dB

Bandwidth at -3.0 dB



Bandwidth at -30.0 dB

Bandwidth at -40.0 dB

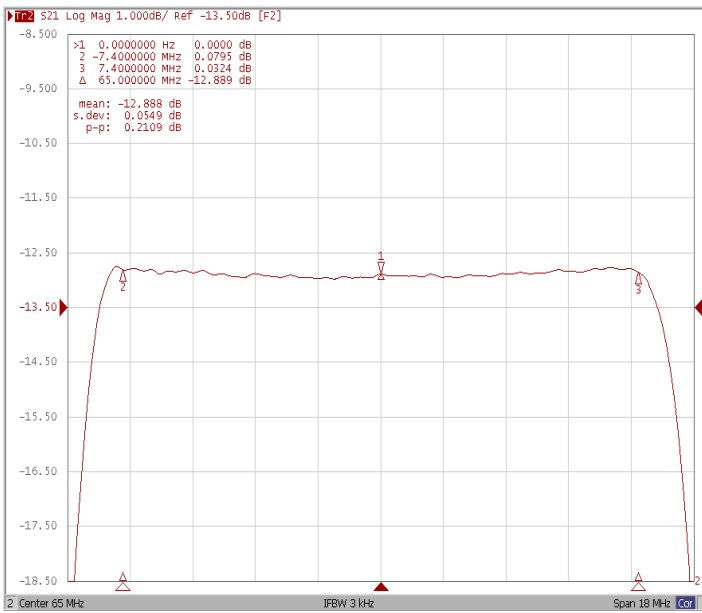




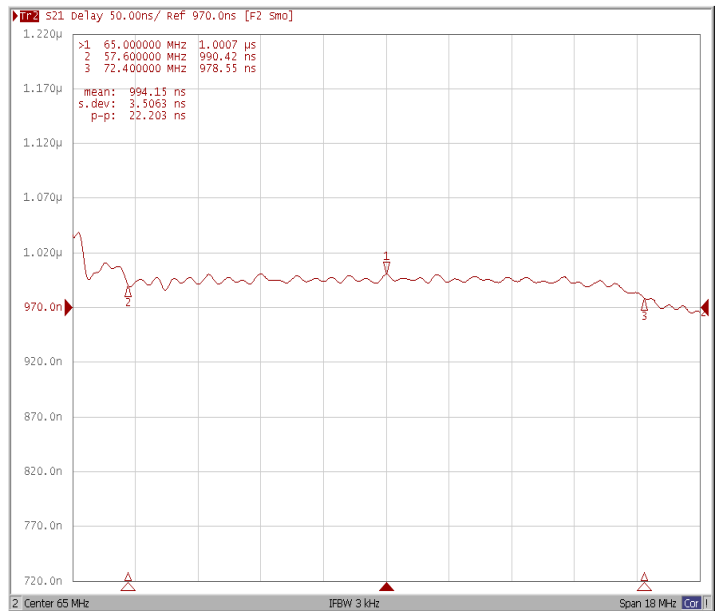
Frequency Characteristics

Frequency Response

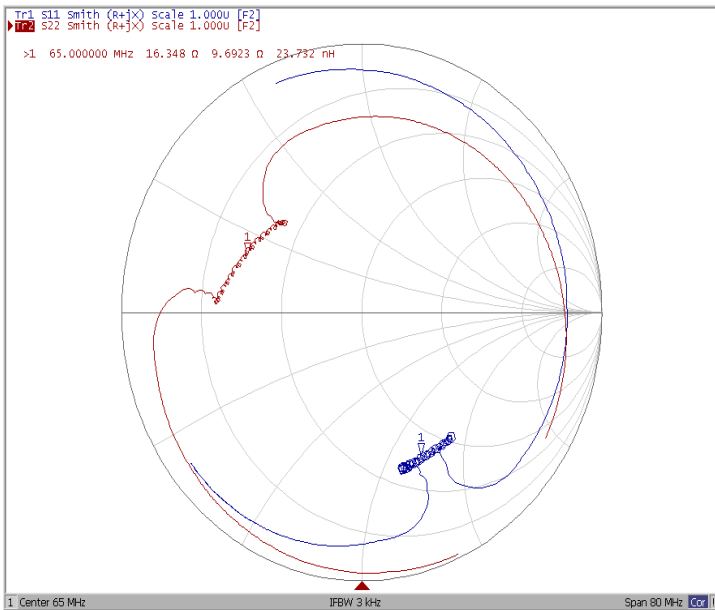
Ripple Variation Fo±7.4MHz



Group Delay Variation Fo±7.4MHz



Smith Chart



VSWR

